

**5716 Wood Mouse Court
Burke, VA 22015**

\$349,000
\$5,000 closing cost credit!



Casey Aboulafia, GRI, ABR, REALTOR
Direct (703) 624-4657
Fax (202) 518-9108
casey@longandfoster.com

www.homeswithcasey.com
Licensed in DC, MD and VA



Beautiful Townhouse with the Best Setting in the Best Burke Neighborhood!

This beautiful townhome in Burke Centre is just what you've been looking for! Enjoy the outdoors in your home's stunning screened in porch with vaulted ceiling, mahogany floors & 2 skylights, on the miles of Burke trails just steps from the house or in your patio & backyard.

One of the biggest models (almost 2,200 square feet), this home boasts 4 true bedrooms and 3.5 baths. The three upstairs bedrooms and two full baths include a spacious master bedroom with a completely renovated en-suite bath and large double-closets. A large bright fourth bedroom and full bath plus a spacious walk-out recreation room are downstairs.

On the main level, the expansive, bright eat-in kitchen has a bay window and updated cabinets. Entertain more formally in your large dining room, or just relax in the generous family room, complete with hardwood floors throughout and a gorgeous brick wood-burning fireplace. A powder room completes the main floor.

Other recent updates include all new windows and heat pump. Walk to the VRE in 5 minutes (or drive 3), and make your commuting painless. A fun children's playground is just steps away, and the best Burke Center pool (1 of 5!) and tennis courts are only a couple minute's walk.

What more could you want?
Come, enjoy and rest easy...you're home!



Long & Foster, Woodley Park Office
2300 Calvert Street, NW / Washington, DC 20008
Office (202) 483-6300 / www.longandfoster.com

EAT-IN KITCHEN



RECREATION ROOM



DINING ROOM



LIVING ROOM



MAINLEVEL

Entry Foyer – Coat closet in hallway. Decorative chandelier. Hardwood floors.

Kitchen – Newly painted cabinets, new pulls. Stainless steel sink with new spray pull faucet and new soap dispenser. Pot rack hanging in front of cut out to entry foyer. Kenmore refrigerator (2007), Whirlpool Quiet Partner II dishwasher (2007), GE Spacemaker microwave, GE glass top range. Disposer (2005). Laminate floors.

Dining Room – Large dining area fits full sized table and chairs, plus china cabinet and bar. Beautiful new chandelier and matching sconce. Crown moulding and chair trim. Oak hardwood floors.

Living Room – Spacious and nice flow - step down from dining room on two sides. Beautiful brick fireplace & mantle. New window (double-paned, easy clean pull-out). Crown and base mouldings. Oak hardwood floors.

Half Bath – In entryway. Mirror and sconce lighting. Sink vanity cabinet. Vent fan. Hardwood floors.

LOWERLEVEL

4th Bedroom – Lots of light through two new windows. Wood shutters. Overhead light. Large closet. Carpet.

Recreation Room – Large room. Three track lights. Hall light. Half height wood paneling with chair moulding. Wet bar with small refrigerator, glass shelves, sink and recessed light. Carpet.

Storage – Under stair storage with light plus larger extra storage room.

Full Bath – Updated. Vanity cabinet with Corian top and sink. Mirror. Two recessed lights. White porcelain toilet. Two new towel racks, plus hand towel ring and robe hook. Heat lamp. Bathtub with ceramic tile. Linen closet. Ceramic tile flooring.

Utility/Laundry Room – Inside bathroom, separated by sliding doors and curtains. 63 gallon GE hot water heater. Kenmore washer/dryer. Recessed light. HVAC unit (2007) with humidifier (2008), both still under warranty until 2011 and 2012, respectively.

MASTER BEDROOM



BEDROOM #2



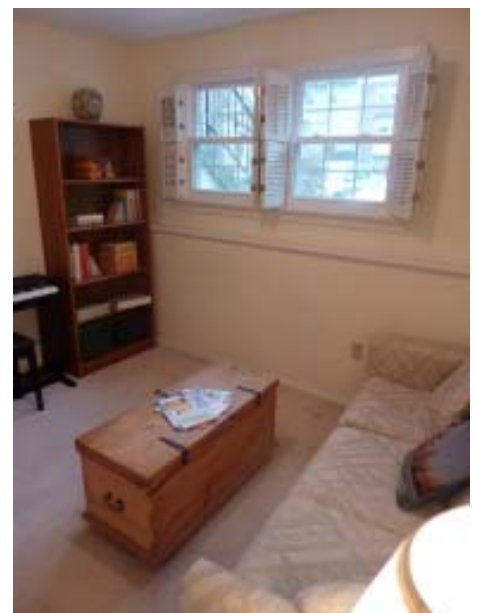
RENOVATED MASTER BATH



BEDROOM #3



BEDROOM #4



UPPER LEVEL

Master Bedroom – Large, bright bedroom. Two new west-facing double-paned, tilt-out windows. Ceiling fan. Two large closets. Room for sitting area with chair. Carpeted.

Master Bath – Brand new renovation (end 2009). Ceramic tiled shower. Shower fixture with 6 spray jets and rain shower. Sliding glass door. New toilet. Modern sink cabinet with porcelain top. New sink fixture, medicine cabinet, mirror and 4 light vanity sconce. Vent fan. New towel rack, paper holder and towel ring. Ceramic tile flooring.

Bedroom #2 – One new window (double-paned tilt-out) with deep ledge. Large closet. Ceiling fan with three lights. Carpet.

Bedroom #3 – One new window (double-paned tilt-out) with deep ledge. Venetian blinds. Closet. Ceiling fan with light. Carpet.

Full hall bath – Tiled in bathtub with hand sprayer showerhead. Sink cabinet. Medicine cabinet. Mirror with light overhead. Vent. White tile flooring.

Linen Closet – Linen closet in hallway.

Attic Storage – Pull-down attic, access in upper hallway.

EXTERIOR

Front – Siding front. Bay window. Siding on side and back. Glassed storm door.

Back – Stunning large screened in deck. Cambria mahogany floors. Vaulted ceiling with two skylights. Fan with 4 lights. View to woods.

Parking – Two assigned spaces. Plenty of visitor parking scattered around lot in cul-de-sac.

Neighborhood amenities – Pool membership to any of 5 Burke Centre pools (nicest one two blocks away). Tennis courts 2 blocks away. Nearby children’s playground just across cul-de-sac. Miles of bike and walking trails. 5 pretty community centers for rent.

PLAYGROUND JUST STEPS AWAY



BURKE CENTRE VRE LINE - WALK THERE OR DRIVE & PARK!



BURKE AREA COFFEE, RESTAURANTS, STORES



NEIGHBORHOOD

Homeowner's Association – Covers trash pickup, mowing and general care of common area, playground upkeep, snow removal through cul-de-sac, tree removal in common areas when needed, bike/walking path maintenance.

Walking distance – VRE station. Commuter bus. Elementary school bus stop. Playground, pool, trails, woods, stream.

2-3 minute drive – VRE station. Wal-Mart, Blockbuster, Starbucks, Giant, various restaurants and more.

About 5 minute drive – Target, Giant and more. Bowling alley. Community library.

About 10 minute drive – Burke Lake (has train, merry-go-round, putt-putt golf, various playgrounds)

Transportation – VRE station just 2-3 minute's drive. Commuter buses on Ward's Grove a block or two away. Franconia/Springfield metro is about a 15 minute drive. 495 is 5-10 minutes away.

TENNIS
COURTS,
WALKING
TRAILS &
POOLS, 2
BLOCKS OR
LESS

OTHER PERTINENT INFORMATION

Approximate square feet - 2,142 per tax record

Legal description - Burke Centre Lt 756 Sec 19E. Lot 756, Plat Folio 772, Tax Map 0772 09 0756

Renovations - New heat pump (2007) and humidifier (2008), both still under warranty. All new double-paned tilt-out windows (2005) with transferable warranty. Screened in deck (2003). Some interior painting (2010). Kenmore refrigerator (2007). Disposer (2005). Whirlpool Quiet Partner II dishwasher (2007). Master bath (2009-10). Water heater (2005ish).

Schools - Terra Centre Elem, Robinson Middle/High School

Taxes - \$3,215 (2009)

Utilities - All electric. Central A/C and heat, Heat pump. Public water and sewer.

Year built - 1979



HOMES
with Casey

See more pictures at
www.homeswithcasey.com!

Long & Foster, Woodley Park Office
2300 Calvert Street, NW / Washington, DC 20008
Office (202) 483-6300 / www.longandfoster.com
www.homeswithcasey.com

Information deemed reliable but not guaranteed

